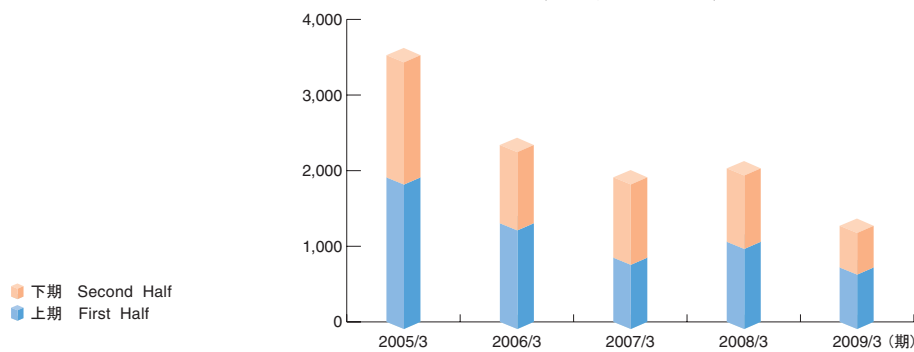


設備投資額
Capital expenditures
(100万円/¥million)

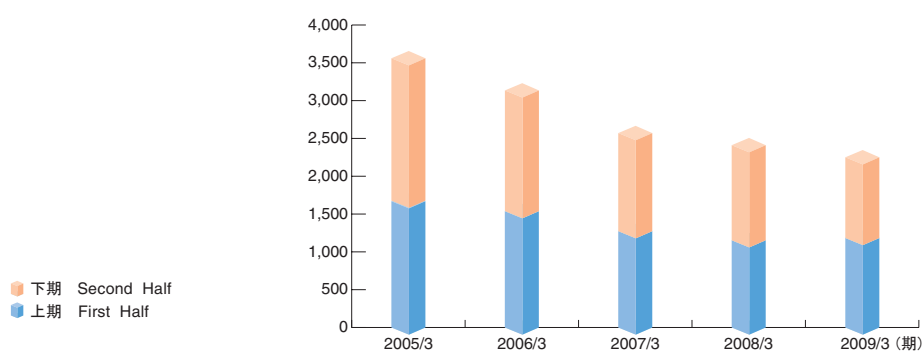


設備投資額	上期 First Half	2005/3	2006/3	2007/3	2008/3	2009/3 (期)
Capital expenditures	通期 Fiscal Year	3,588	2,357	1,912	2,041	1,286

【注】無形固定資産を含めております。
Intangible fixed assets are included in the capital expenditures.

(100万円/¥million)

減価償却費
Depreciation and Amortization
(100万円/¥million)

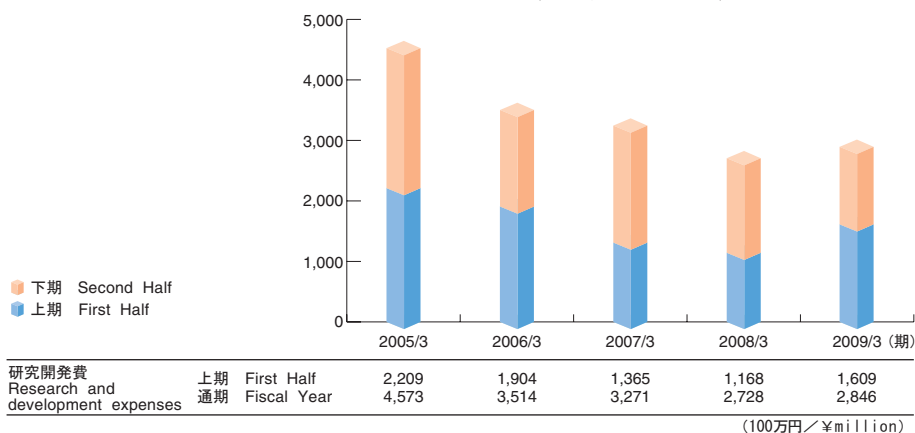


減価償却費	上期 First Half	2005/3	2006/3	2007/3	2008/3	2009/3 (期)
Depreciation and Amortization	通期 Fiscal Year	3,517	3,134	2,586	2,406	2,428

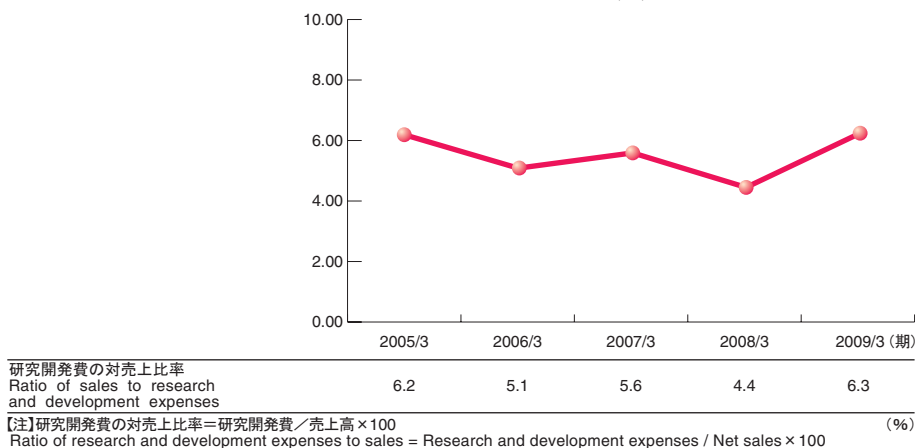
(100万円/¥million)

※100万円未満の数字は切捨てて表記しております。Amounts less than 1 million yen have been omitted.

研究開発費
Research and development expenses
(100万円/¥million)



研究開発費の対売上比率
Ratio of research and development expenses to sales
(%)



※100万円未満の数字は切捨てて表記しております。 Amounts less than 1 million yen have been omitted.